

## UNJLC Sudan

# NFI and Emergency Shelter Sector Monthly Update #7 Darfur July 2007

### HIGHLIGHTS

- Delivery of the final tranche of NFI's for distribution in the Masterei, Siliea and Kulbus areas of West Darfur remains delayed due to insecurity.
- Insecurity also prevented the assessment of reported new arrivals in the Kass area of South Darfur.
- ICRC cooperated with UNJLC to distribute NFIs in the Tawila area of North Darfur.

### FUNDING OVERVIEW

2007 UN Work Plan Project Name	Total Request	Non CHF Funding Secured (inc 2006 carryover)	CHF 1st round allocation	CHF 2nd round allocation	Reported Shortfall	
					Amount	%
WFP (UNJLC) - SUD-07/NS21 - UNJLC - Coordination and Management of the NFI and Emergency Shelter Sector (HA) [Darfur only]	\$2,000,000		\$425,000	\$100,000	\$1,475,000	74%
CARE - SUD-07/NS15 - Greater Darfur Logistics Operations for Non-Food Items	\$6,600,000	\$5,940,000	\$660,000		\$0	0%
UNICEF - SUD-07/NS19* - Procurement of Non-Food Items for the Darfur Non-Food Item Common Pipeline and for Inter-Agency NFI and Emergency Shelter Response and Organised Returns in non-Darfur North Sudan [Darfur only]	\$9,420,171	\$11,140,171	\$280,000		\$0	0%
IOM - SUD-07/NS14 - Return Assistance and Provision Contingencies	\$2,500,000		\$230,000		\$2,270,000	91%
HelpAge - SUD-07/NS18 - NFI and Shelter Response for Older Individuals and their Dependents in Conflict Affected Areas in West Darfur	\$64,600		\$30,000	\$34,600	\$0	0%
CHF - SUD-07/NS16 - Environmentally Friendly Shelter Provision for up to 20,000 IDP Families in North and South Darfur States	\$950,000		\$840,000	\$110,400	-\$400	0%
Concern - SUD-07/NS27 - NFI Distribution in West Darfur.	\$435,000	\$185,000	\$120,000	\$130,000	\$0	0%
Goal - SUD-07/NS17 (WITHDRAWN)	\$0	\$0	\$0	\$0	\$0	0%
CRS - SUD-07/NS28 - Shelter and NFI Distribution and Coordination in West Darfur.	\$300,000		\$75,000	\$125,000	\$100,000	33%
<b>Total</b>	<b>\$22,269,771</b>	<b>\$15,925,171</b>	<b>\$2,000,000</b>	<b>\$500,000</b>	<b>\$3,844,600</b>	<b>17%</b>

NB the above table may not include all non-CHF funding.

The OFDA funding announced in the last bulletin has been allocated. The total amount available for procurement was USD1.5 million. The balance has been allocated as follows:

Description	Quantity/Cost	Total cost	Comments
Jerry Cans	69519 pce	\$201,605	Orders already made against CHF funding which has now been transferred to RoS programme
Sleeping Mats	44400 pce	\$62,160	
LLIN & Anti-Malarials		\$200,000	For UNICEF sector use <b>NOT Common Pipeline</b>

Research (Shelter Consultant 3 months)		\$35,000	
Research (Survey Coordinator 3 months)		\$35,000	
Research (Survey Costs)		\$15,000	
Jerry Cans	30000 pce @USD3	\$90,000	This completes the planned 2007 procurement of jerry cans
Plastic tarps ( for 2008 delivery)	35,000 pce @ USD10	\$350,000	Early procurement for 2008 to allow for long lead times
Tara Berkley Stoves (under UNICEF PCA with CHF NGO)	3000 pce	\$81,000	Cost includes component to cover CHF carrying out sensitisation with distributing partner & beneficiaries on use of stoves
Cooking Set	40,000 pce @ USD 10.2	\$402,000	Final number dependent on actual cost
Transport costs from Port Sudan for Plastic Sheeting purchased with savings on CERF grant as these will be incurred outside CERF period		\$28,000	

**\$1,499,765**

The sector is well funded and this is reflected in the ability to utilise the OFDA funding above on a wider range of activities than the direct procurement of standard Common Pipeline items.

### NFI & EMERGENCY SHELTER SECTOR COORDINATION

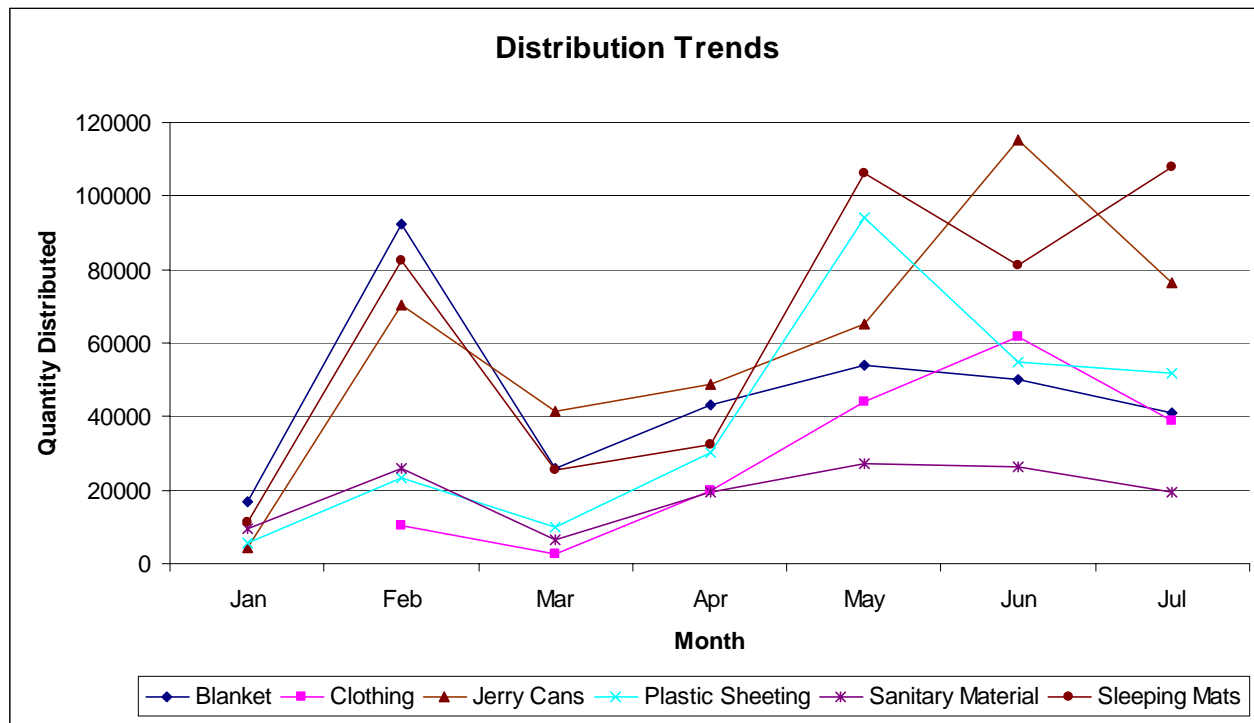
Bi-monthly sector coordination meetings were held at each of the state capitals with an additional monthly meeting held in Khartoum. To be included in the mailing list to receive notification of these meetings, please contact the relevant Field Logistics Officer, or for Khartoum the Darfur NFI Coordinator. Their contact details are listed at the end of this document.

### NFI COMMON PIPELINE

Distributions in July tapered off slightly with the onset of major rains and the completion of significant distributions of plastic sheeting.

Lack of access due to insecurity particularly in the Jebel Marra has prevented a detailed assessment of NFI needs in the area. Small interventions have been carried out using stock held in Zallingei but there is a need for an overall assessment of both needs and the security situation before major distributions are carried out.

### Overall Distribution Trends



## Households Served by Month

<b>Northern Darfur</b>	Jan	Feb	Mar	Apr	May	Jun	Jul
<i>Disaster Affected Populations</i>	0	85	0	1,500	0	50	132
<i>IDPs Requiring Replenishment</i>	0	32,036	29,177	1,300	7,193	0	14,110
<i>Newly Displaced</i>	0	1,333	1,636	1,069	1,285	400	2,507
<i>Populations not previously served</i>	0	0	0	0	2,011	6,102	0
<b>TOTAL</b>	<b>0</b>	<b>33,454</b>	<b>30,813</b>	<b>3,869</b>	<b>10,489</b>	<b>6,552</b>	<b>16,749</b>

<b>Southern Darfur</b>	Jan	Feb	Mar	Apr	May	Jun	Jul
<i>Disaster Affected Populations</i>	0	0	15	756	4,036	53	70
<i>Extremely Vulnerable Persons</i>	0	0	0	0	0	1	0
<i>IDPs Requiring Replenishment</i>	0	0	0	410	9,600	20,833	11,300
<i>Newly Displaced</i>	3,081	10,576	2,085	8,946	4,971	4,126	1,148
<i>Organised Returnees</i>	0	2,600	2,600	2,633	0	0	0
<i>Populations not previously served</i>	0	0	0	310	300	250	1,180
<i>Spontaneous Returnees</i>	0	0	0	0	400	0	0
<i>Vulnerable Host Populations</i>	581	0	0	0	0	0	0
<i>Vulnerable Rural Populations</i>	0	310	315	0	2,950	0	0
<b>Southern Darfur Total</b>	<b>3,662</b>	<b>13,486</b>	<b>5,015</b>	<b>13,055</b>	<b>22,257</b>	<b>25,263</b>	<b>13,698</b>

<b>Western Darfur</b>	Jan	Feb	Mar	Apr	May	Jun	Jul
<i>Disaster Affected Populations</i>	1,400	0	0	0	35	0	0
<i>Extremely Vulnerable Persons</i>	0	0	0	0	0	0	173
<i>IDPs Requiring Replenishment</i>	1,080	7,371	7,400	10,361	54,061	34,459	18,294
<i>Newly Displaced</i>	0	0	460	1,000	1,150	6,353	2,047
<i>Populations not previously served</i>	0	0	0	4,717	4,350	1,568	7,650
<i>Spontaneous Returnees</i>	0	0	0	0	808	0	0
<i>Vulnerable Host Populations</i>	0	0	0	0	0	933	0
<i>Vulnerable Rural Populations</i>	0	2,000	0	7,280	2,891	0	2,309
<b>Western Darfur Total</b>	<b>2,480</b>	<b>9,371</b>	<b>7,860</b>	<b>23,358</b>	<b>63,295</b>	<b>43,313</b>	<b>30,473</b>

NB the households served may include duplications over different months

## Implementing Partners in July

North Darfur	South Darfur		West Darfur
CHF International	ACF	Rehaid El-Fursan Rural Development	CAM
GAA	CARE Programme		Concern
IRC	CARE Warehouse	RPDO	CRS
OXFAM	CHF International	Samaritans	HelpAge
PAI	DRC	Solidarities	SCF-US
Relief International	Humedica	Spanish Red Cross	Tearfund
SC-Sweden	IMC	SPCR	Triangle
Spanish Red Cross	IRC	SRCS	UNDP

In addition the ICRC assisted the Common Pipeline by distributing CP items in North Darfur

MERCY	Sudan Red Crescent	War Child
MSF-H	Triangle	World Relief
NOCD	UNFPA	
OCHA	UNICEF	
OXFAM	WVI	

## Stock Position

NFI Commodities	In stock in Sudan as of 04th August 2007																		
	EI Obeid			EI Geneina				Nyala				EI Fasher				Total			
	In Stock	Pending ARF	Balance Available	In Stock	In Transit	Pending ARF	Balance Available	In Stock	In Transit	Pending ARF	Balance Available	In Stock	In Transit	Pending ARF	Balance Available	In Stock	In Transit	Pending ARF	Balance Available
Blankets	476,740	2,600	474,140	36,625			36,625	72,160			72,160	37,720		760	36,960	623,245	-	3,360	619,885
Plastic Sheeting	11,918	1,525	10,393	8,918	5,480		14,398	4,250			4,250	15,115		250	14,865	40,201	5,480	1,775	43,906
Sleeping Mats	366,416		366,416	7,681			7,681	60,275			60,275	31,505		500	31,005	465,877	-	500	465,377
Mosquito Nets	6,600		6,600				-	40			40			-	-	6,640	-	-	6,640
Jerry cans	11,473	12,664	(1,191)	17,608			17,608	53,302			53,302	43,526		500	43,026	125,909	-	13,164	112,745
Sanitary Material			-	30,260			30,260	2,542			2,542	39,760		560	39,200	72,562	-	560	72,002
Women's Clothing	152,986		152,986	20,901	14,400		35,301	129,800			129,800	73,611		500	73,111	377,298	14,400	500	391,198
IOM family packages			-				-	18			18			-	-	18	-	-	18
Tents			-				-	29			29			-	-	29	-	-	29

### Monitoring and Evaluation

M&E teams carried out 10 On-Site Distribution Monitorings and 9 Post Distribution Monitorings.

In general beneficiaries were happy with the distribution process and the type of items distributed but expressed dissatisfaction at the quantities being distributed.

A detailed Monitoring & Evaluation Report is published separately

### OTHER PIPELINE

No significant information received.

### PLANNING ACTIVITIES

Preliminary activities for the 2008 UN & Partners Work Plan commenced with meetings in Khartoum to brief sector leads and regional focal points on the process.

In the field, planning is underway for the distribution of blankets and sleeping mats for the cold season. These distributions will commence once the rainy season has ceased.

### UNJLC CONTACTS (Darfur)

Darfur NFI Coordinator (also Head of Office North Darfur) – Alister Shields – [alister.shields@wfp.org](mailto:alister.shields@wfp.org)

Head of Office South Darfur – Jeanemile Canu – [jeanemile.canu@wfp.org](mailto:jeanemile.canu@wfp.org)

Head of Office West Darfur – Allan Ng – [allanng.hb@wfp.org](mailto:allanng.hb@wfp.org)