

UNJLC Pakistan Earthquake

BULLETIN No. 45

Period, Thursday April 27th – Wednesday, May 3rd, 2006

UNJLC Bulletins aim to provide a clear and concise regular overview of the logistics situation in the earthquake-affected area of Pakistan and adjacent areas as it pertains to humanitarian relief work. They focus on practical issues affecting the welfare of the afflicted populace and related humanitarian work such as the status of transport routes for getting supplies and personnel into the area, relevant administrative or commercial developments, air (including strategic airlift and helicopter operations), customs and immigration matters, and the availability of accommodation and fuels. They further seek to identify major issues for the humanitarian community and other interested parties, to provide relevant background and constructive recommendations on current issues, and to alert responsible parties to emerging factors.

Summary and Highlights

Days since October 8th Earthquake: 207

- The **ERRA-UN Early Recovery Plan** was officially approved on April 29th, meaning that the next phase of the operation will soon be underway.
- Road access has largely improved across the affected area due to the good weather and ongoing repair work, and a tremor on the morning of May 3rd in the Mansehra region does not seem to have had a serious effect on road conditions.
- **UNHAS** has officially announced that as of May 31st it is planning to cease helicopter operations in Pakistan due to lack of funding.

Contents

1. Operations Update
2. Road Access - Muzaffarabad
3. Mapping
4. Aviation Update: Helicopter Status

1. Operations Update

As of April 29th, ERRA has officially agreed to the ERRA-UN Early Recovery Plan, which will be launched both in Geneva and across the affected area in the coming weeks. This final endorsement now means that agencies and NGOs can now present their project proposals to donors for the next phase of the operation. A rise in activity levels is expected to follow, along with an increase in the demand for cargo transport and other logistics services.

2. Road Access

Road access has generally improved over the last few weeks in line with the continued good weather. In the Batagram area all key routes remain open, and secondary roads around Muzaffarabad are improving continually through community action. In the Bagh area, most of the roads are also open and repairs are underway before the monsoon season. However roads in the Kaghan valley are still subject to frequent landslides, particularly between Paras and Jared. After a tremor on the morning of May 3rd missions around Mansehra were halted while conditions were assessed, but the Pakistan Military has now confirmed that no major landslides or rockfall have been noted in the area and travel can resume as planned. UNJLC road assessments, conditions updates and maps can be found at www.unjlc.org/pakistan.

3. Mapping

As of this week, all relevant UNJLC maps now include Union Council boundaries provided by HIC. UNJLC has also added all newly GPSed roads to its standard range of maps, leading to greater map accuracy. These are available for download on the UNJLC website at www.unjlc.org/pakistan/maps, or in hard copy from the UNJLC Islamabad office and field coordinators.

4. Aviation Update: Helicopter Status

Helicopter capacity has decreased again with the May 3rd redeployment of the four DFID Mi-8s tasked by **UNHAS**, which brings the UNHAS fleet down to only 4 Mi-8s. The **Merlin** Mi-8 and **ICRC** Super Puma have also now ceased operations. ICRC will continue to operate one Mi-8 flying out of Muzaffarabad until May 10th, at which point its air operation will end.



The UNHAS helicopter operation is currently due to end on May 31st due to lack of funding.

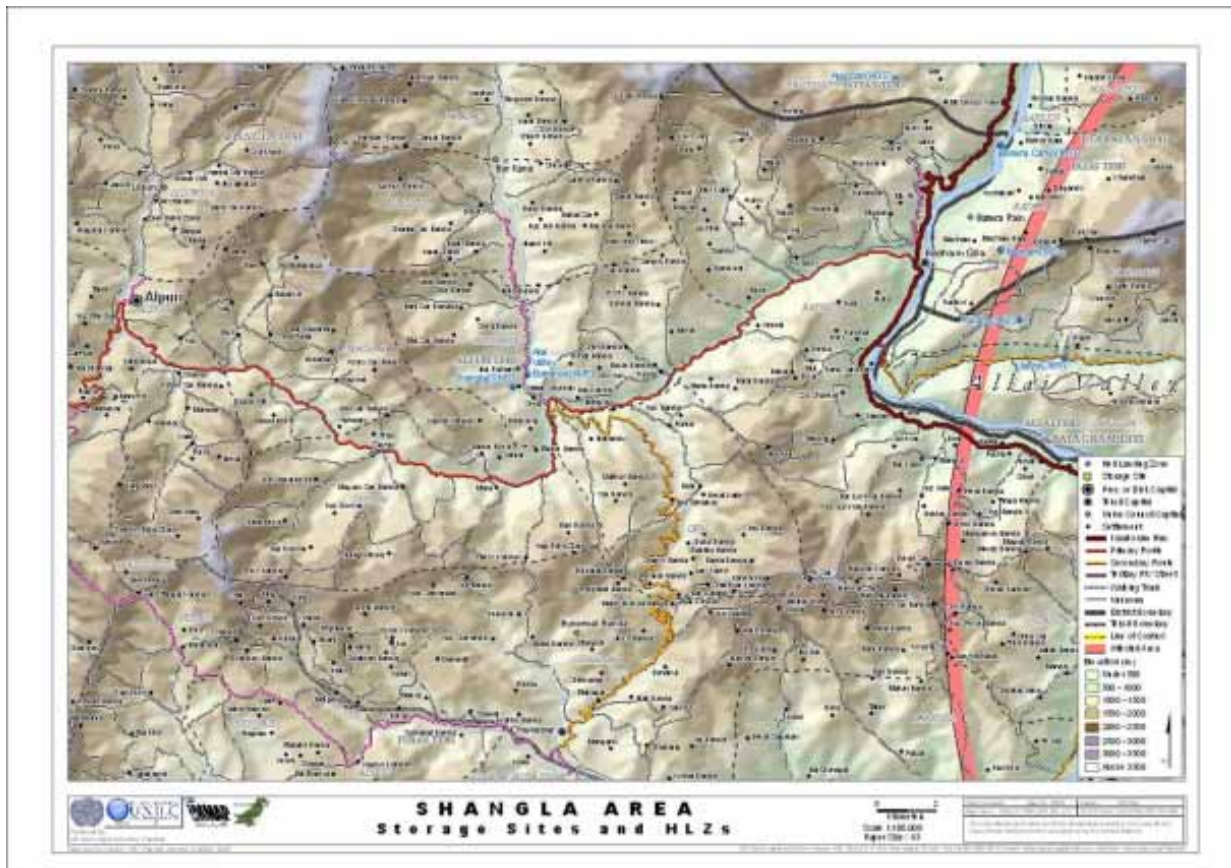
ABOUT UNJLC: UNJLC is an inter-agency facility reporting to the Islamabad-based Humanitarian Coordinator for the South Asia (Pakistan and India) Earthquake and strategically to the Inter Agency Standing Committee. Its mandate is to coordinate and optimise logistics capabilities of humanitarian organisations in large scale emergencies. UNJLC operates under the custodianship of WFP, which is responsible for the administrative and financial management of the unit. UNJLC is funded from voluntary contributions that are channelled through WFP. The UNJLC project document for the Pakistan Earthquake can be viewed at the UNJLC website (www.unjlc.org).

As of May 1st, UNHAS has officially announced that due to lack of funding it is planning to cease all helicopter operations in Pakistan on May 31st. Passenger and cargo flights will continue until that date, however at a reduced capacity. Users are requested to note that pax and cargo flights are now restricted to mornings only due to high turbulence caused by the afternoon heat. Passenger booking procedures have also changed. These can now be done in person only through the **UNHAS booking office** at its new Islamabad address, **House 6, Street 2, F8/3**. Emails and bookings through UNHAS field officers will no longer be accepted. NGOs without a representative in Islamabad will be obliged to establish an Islamabad-based focal point. Meanwhile, NGOs and agencies newly in country for the reconstruction phase of the operation will be required to register with the Country Team in order to be eligible for UNHAS flights, and all organisations using this service are requested to provide UNHAS with up-to-date staff lists for purposes of verification.

Feedback is encouraged from all users on their projected destinations over the next phase of the operation and the suitability of the new passenger schedule. This information can be forwarded to Islamabad.unhas@wfp.org. Passenger flights remain free for the month of May, however users are requested to

note that a system of full cost recovery is now in place for all special flights. The new UNHAS passenger schedule and booking procedures can be found at www.unjlc.org/pakistan.

As of 3 rd May		Number of aircraft	
Aircraft Type		3 rd May	Comments
UNHAS Tasked Assets:			
Mi-8T		2	The UNHAS fleet is currently 4xMi-8 helicopters, one of which will be reserved for passenger flights.
Mi-8 MTV		2	
Sub-total		4	
Other:			
Mi-8 MT		1	Operated by ICRC
AS-332 Super Puma		-	
AB-139		2	Operated by Aga Khan Foundation (Pakistan)
AS-350 Squirrel		2	Operated by AirServ for MSF Holland
Mi-8T		-	Operated by Merlin
Sub-total		5	
Total		9	



All UNJLC maps have now been updated to show Union Council boundaries provided by HIC.

Contact information and addresses: UNJLC Pakistan Earthquake is located at **House 10A, Street 2, F-8/3, Islamabad** near **UN Humanitarian Air Services**. Fax: +92 (0)51 285-0003.

UNJLC Pakistan: pakistan@unjlc.org. For matters related to air: pakistan.air@unjlc.org
 For matters related to roads: pakistan.roads@unjlc.org. For information: pakistan.infoteam@unjlc.org

Detailed information on the Clusters managing the humanitarian response, including the Logistics Cluster in which UNJLC plays a key role, is available on www.un.org.pk. Daily situation reports from the UN Emergency Response Centre – Islamabad are available on www.reliefweb.int.

In order of funding, UNJLC Pakistan is supported by **Norway, New Zealand, the USA and Canada**. The **United Kingdom** has provided valuable in-kind contributions through **DFID**. Seconded staff have been provided by **Australia** (through RedR Australia), **Denmark** (DRC), **Germany** (THW), **Sweden** (SRSA), **Norway** (NRC), the **UK** (DFID), the **Vietnam Veterans of America Foundation** and **UNICEF**.