

# UNJLC Pakistan Earthquake

## BULLETIN No. 38

Period, Thursday March 9th – Wednesday, March 15th, 2006

*UNJLC Bulletins aim to provide a clear and concise regular overview of the logistics situation in the earthquake-affected area of Pakistan and adjacent areas as it pertains to humanitarian relief work. They focus on practical issues affecting the welfare of the afflicted populace and related humanitarian work such as the status of transport routes for getting supplies and personnel into the area, relevant administrative or commercial developments, air (including strategic airlift and helicopter operations), customs and immigration matters, and the availability of accommodation and fuels. They further seek to identify major issues for the humanitarian community and other interested parties, to provide relevant background and constructive recommendations on current issues, and to alert responsible parties to emerging factors.*

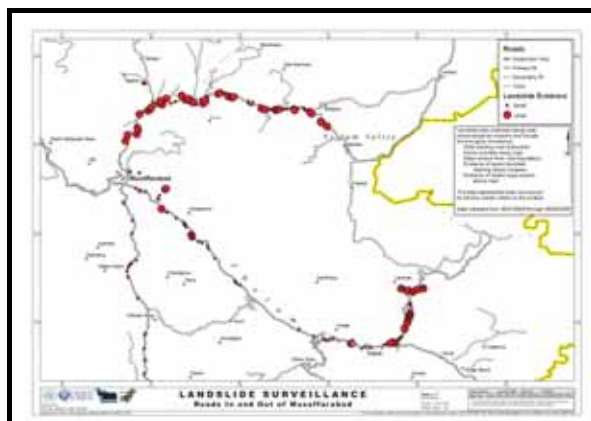
### Summary and Highlights

**Days since October 8<sup>th</sup> Earthquake: 158**

- The recent rainfall has caused landslides in many areas, cutting off road access to various locations across the affected area.
- As of March 15<sup>th</sup>, tents, tarpaulins and blankets brought in as relief goods will no longer be eligible to be imported free of customs duty.
- Helicopter capacity has decreased once again with reductions this week in both the ICRC and UNHAS fleets.

### Contents

1. Road Access
2. Mapping
3. Customs Advisory
4. LSS Pipeline
5. Aviation Update: Helicopter Status



### 1. Road Access

The recent rainfall has caused landslides on many roads in the affected area, severely limiting road access in certain districts. Travel between Bagh and Sudhan Gali is restricted due to rockfalls, subsidence and electrical fires caused by damaged pylons. Many roads have been cut off once again in the Allai valley and the Neelum valley road is considered dangerous and Red No Go. For daily road status updates and corresponding maps please see [www.unjlc.org/pakistan](http://www.unjlc.org/pakistan).

### 2. Mapping

The UNJLC GIS team has finished collecting priority road assessment and GPS data and is now integrating this into the UNJLC map data set. The current focus is to produce an improved map layer showing accessibility across the area of operations. These maps will serve to support the UNJLC cargo movement cell in prioritising the use of air and road cargo transport. They will also support analyses of returnee movement, help identify potential bottlenecks due to road inaccessibility and influence decisions about where to establish new facilities to serve the reconstruction efforts. Other recent UNJLC GIS projects have included a map of flight tactical reference points for pilots to support the humanitarian air effort and the following map of landslide points in the Muzaffarabad district which serves to identify problem areas along the Neelum and Jhelum valley roads. For the full map catalogue and map request forms please see [www.unjlc.org/pakistan/maps](http://www.unjlc.org/pakistan/maps).

### 3. Customs Advisory

The 14.10.05 exemption from customs duty, regulatory duty and sales tax offered by the Pakistan government for the import of relief items will be withdrawn effective March 15<sup>th</sup> 2006 for the import of blankets, tents and tarpaulins. After this date, only those relief goods complying with the conditions outlined under Heading 9911 of the Pakistan Customs Tariff will be eligible for an NOC (No Objection Certificate). This heading of the Pakistan Customs Tariff allows exemption for: "Relief goods donated by Foreign Government/Agencies for free distribution among the victims of natural disaster or other catastrophes as are certified by the authorized officer of Federal/Provincial government." If agencies or NGOs are confronted with any issues regarding this change they are invited to contact UNJLC Islamabad for assistance at [pakistan.infoteam@unjlc.org](mailto:pakistan.infoteam@unjlc.org).

### 4. LSS Pipeline

As mentioned in previous bulletins, in mid-December, UNJLC began using the LSS (Logistics Supply System) for

**ABOUT UNJLC:** UNJLC is an inter-agency facility reporting to the Islamabad-based Humanitarian Coordinator for the South Asia (Pakistan and India) Earthquake and strategically to the Inter Agency Standing Committee. Its mandate is to coordinate and optimise logistics capabilities of humanitarian organisations in large scale emergencies. UNJLC operates under the custodianship of WFP, which is responsible for the administrative and financial management of the unit. UNJLC is funded from voluntary contributions that are channelled through WFP. The UNJLC project document for the Pakistan Earthquake can be viewed at the UNJLC website ([www.unjlc.org](http://www.unjlc.org)).

the purposes of **NFI** pipeline tracking. The goal has been to compile pipeline data from the Pakistan emergency to give an overview of agency and NGO pipeline data and provide for forward planning in terms of logistical support. As of March 14<sup>th</sup>, all February data has been posted at [www.unjlc.org/pakistan](http://www.unjlc.org/pakistan). This includes the incoming/on order data as of March 14<sup>th</sup>, stock balance and cumulative distribution figures for February, draft 5 of the total operation summary and March pipeline projections for transport by road and air. UNJLC is also currently offering LSS training sessions to interested parties. These two-hour workshops will be held on March 17<sup>th</sup>, March 20<sup>th</sup> and March 24<sup>th</sup> and will cover general LSS information, logistics and training. Further sessions can be made available on demand. For more information and booking please contact UNJLC's LSS pipeline officer at [tania.regan@wfp.org](mailto:tania.regan@wfp.org).

## 5. Aviation Update: Helicopter Status

The relief operation's helicopter capacity has been once again this week. An **ICRC** Puma crashed near Muzaffarabad on March 9<sup>th</sup>. Both crew members were injured but are recovering well and have now returned home. The second ICRC Puma and the ICRC Mi-26 are in the process of being redeployed.

**UNHAS** has cancelled the contracts of three more Mi-8s due to lack of funding. The aircraft are scheduled to leave on March 21<sup>st</sup>, taking the UNHAS fleet down to a total of 13 helicopters. The US Military Chinooks, Australian S-70s and German Stallions currently tasked by UNHAS will also be redeployed on March 31<sup>st</sup> at the end of their mandate. These combined departures will make for a severe reduction in humanitarian air capacity at a time when many areas remain inaccessible and roads are still subject to frequent landslides.

Cargo and passenger flights were largely cancelled between March 11<sup>th</sup> and March 14<sup>th</sup> due to bad weather. The current backlog of relief cargo is 3427 MT of food and 310 MT of NFI. Below are the totals of air cargo moved over the last week by UNHAS-tasked flights.

| DATE     | WEIGHT MT | STATUS            |
|----------|-----------|-------------------|
| March 8  | 365       | Moved             |
| March 9  | 210       | Moved             |
| March 10 | 363       | Moved             |
| March 11 | 150       | Moved             |
| March 12 | 16.8      | Flights Cancelled |
| March 13 | 60        | Flights Cancelled |
| March 14 | 0         | Flights Cancelled |

| As of 15 <sup>th</sup> March  |                        | Number of aircraft    |                        | Cargo Capacity, tonnes |   | Comments |
|---|------------------------|-----------------------|------------------------|------------------------|---|----------|
| Aircraft Type   | 15 <sup>th</sup> March | 8 <sup>th</sup> March | 15 <sup>th</sup> March | 8 <sup>th</sup> March  |   |          |
| <b>UNHAS Tasked Assets:</b>   |                        |                       |                        |                        |   |          |
| Mi-8 MT   | 13                     | 13                    | 48.75                  | 48.75                  | A reduction in UNHAS chartered assets can be expected over the coming weeks due to lack of funding.                         |          |
| Mi-26T  | 1                      | 1                     | 18.00                  | 18.00                  |   |          |
| Kamov 32  | 2                      | 2                     | 8.00                   | 8.00                   |   |          |
| <b>Sub-total</b>  | <b>16</b>              | <b>16</b>             | <b>74.75</b>           | <b>74.75</b>           |   |          |
| <b>Government of Pakistan Assets:</b>   |                        |                       |                        |                        |   |          |
| Mi-17   | 6                      | 6                     | 22.50                  | 22.50                  | Pakistani Government assets are deployed both in the forward field locations and from Chaklala Air Force Base in Islamabad. |          |
| Bell 412  | 2                      | 2                     | 4.00                   | 4.00                   |   |          |
| UH-2H   | 3                      | 3                     | 6.00                   | 6.00                   |   |          |
| Alouette –III   | 1                      | 1                     | 1.50                   | 1.50                   |   |          |
| Lama  | 2                      | 2                     | 1.00                   | 1.00                   |   |          |
| SA-330 Puma   | 1                      | 1                     | 2.00                   | 2.00                   |   |          |
| AB-205  | 1                      | 1                     | .50                    | .50                    |   |          |
| <b>Sub-total</b>  | <b>16</b>              | <b>16</b>             | <b>37.50</b>           | <b>37.50</b>           |   |          |
| <b>Foreign Government and Foreign Military Assets in Support of the Pakistani Government:</b> |                        |                       |                        |                        |   |          |
| S-70  | 4                      | 4                     | 12.00                  | 12.00                  | Australian Military. Two of the S-70s are tasked by UNHAS.  |          |
| CH-53   | 2                      | 2                     | 10.00                  | 10.00                  | German Military, tasked by UNHAS.   |          |
| CH-47 – Chinook   | 8                      | 8                     | 48.00                  | 48.00                  | US Military. Four or more of the US CH-47 Chinooks work with UNHAS through the AOC.   |          |
| <b>Sub-total</b>  | <b>14</b>              | <b>14</b>             | <b>70.00</b>           | <b>70.00</b>           |   |          |
| <b>Other:</b>   |                        |                       |                        |                        |   |          |
| Mi-8 MT   | 1                      | 1                     | 3.75                   | 3.75                   | Operated by ICRC  |          |
| SA-330 Puma   | -                      | 2                     | -                      | 6.00                   |   |          |
| AS-332 Super Puma   | 1                      | 1                     | 3.00                   | 3.00                   |   |          |
| Kamov 32  | 1                      | 1                     | 4.00                   | 4.00                   |   |          |
| Mi-26   | -                      | 1                     | -                      | 18.00                  | Operated by Aga Khan Foundation (Pakistan)  |          |
| AB-139  | 4                      | 4                     | 22.00                  | 22.00                  |   |          |
| AS-350 Squirrel   | 2                      | 2                     | 0.50                   | 0.50                   | Operated by AirServ for MSF Holland   |          |
| Mi-8T   | 1                      | 1                     | 3.25                   | 3.25                   | Operated by Merlin  |          |
| <b>Sub-total</b>  | <b>10</b>              | <b>13</b>             | <b>36.50</b>           | <b>60.50</b>           |   |          |
| <b>Overall Total</b>  | <b>56</b>              | <b>59</b>             | <b>218.75</b>          | <b>242.75</b>          |   |          |

**BULLETIN ENDS**

**Contact information and addresses:** UNJLC Pakistan Earthquake is located at **House 10A, Street 2, F-8/3, Islamabad** near **UN Humanitarian Air Services**. Fax: +92 (0)51 285-0003.

UNJLC Pakistan: [pakistan@unjlc.org](mailto:pakistan@unjlc.org). For matters related to air: [pakistan.air@unjlc.org](mailto:pakistan.air@unjlc.org)

For matters related to roads: [pakistan.roads@unjlc.org](mailto:pakistan.roads@unjlc.org). For information: [pakistan.infoteam@unjlc.org](mailto:pakistan.infoteam@unjlc.org)

Detailed information on the Clusters managing the humanitarian response, including the Logistics Cluster in which UNJLC plays a key role, is available on [www.un.org.pk](http://www.un.org.pk). Daily situation reports from the UN Emergency Response Centre – Islamabad are available on [www.reliefweb.int](http://www.reliefweb.int).

In order of funding, UNJLC Pakistan is supported by **Norway**, **New Zealand**, the **USA** and **Canada**. The **United Kingdom** has provided a valuable in-kind contributions through **DFID**. Seconded staff have been provided by **Australia** (through RedR Australia), **Denmark** (DRC), **Germany** (THW), **Sweden** (SRSA), **Norway** (NRC), the **Vietnam Veterans Foundation of America** and **UNICEF**.